



Recombinant allergen Equ c 1 for *Equus caballus* (Domestic horse)

CATALOG NUMBER: RAL0007

LOT NUMBER: #

RECOMBINANT ALLERGEN: *Equus caballus* Equ c 1 (Gregoire *et al.*, 1996).

DESCRIPTION: the *Equus caballus major* allergen, the lipocalin Equ c 1, has been prepared as a recombinant mature allergen fused to a his-tag.

PRESENTATION: liquid protein solution

SOURCE: *Escherichia coli*

MOLECULAR WEIGHT: determined by SDS-PAGE, the protein band is between molecular markers of 35,000 and 25,000 Da, while relative molecular mass calculated from amino acid sequence is 26,536.5 Da.

BATCH COMPOSITION:

COMPONENTS	COMPOSITION
his-Equ c 1	recombinant allergen with a his-tag
Storage buffer	20 mM phosphate buffer pH 8, 0.1% polyoxyethylene (10) tridecyl ether and 0.1 M KCl

QUALITY CONTROL:

1. PROTEIN CONCENTRATION DETERMINED ESPECTROPHOTOMETRICALLY

DO₂₈₀ = 0.850
A_{0.1%} (=1 g/l) = 0.717
CONCENTRATION*: 1.18 mg/ml

* The measurement of the protein concentration has been performed with the theoretical extinction coefficient of the recombinant protein obtained from Gill and vonHippel, 1989

2. PURITY CONTROL IN SDS-PAGE: 15%

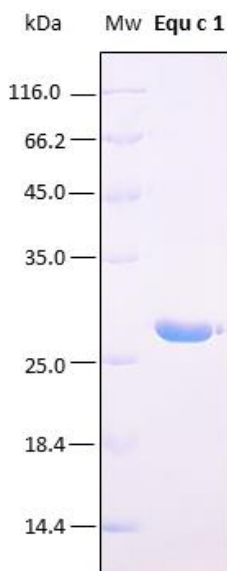


Figure 1. SDS-PAGE analysis (15%) of 4 µl of recombinant allergen. Purity is >95% as determined by gel electrophoresis.

3. ABSENCE OF PRECIPITATION AFTER A FREEZING AND THAWING CYCLE: ok

LOT SPECIFICATIONS:

- 1. CONCENTRATION:** 1.18 mg/ml
- 2. TOTAL QUANTITY PER ALIQUOT:** 1 mg
- 3. TOTAL VOLUME PER ALIQUOT:** 0.886 ml
- 4. STORAGE:** Protein is shipped with dry ice. Upon arrival, it should be aliquoted to avoid repeated freezing and thawing cycles and stored at -20°C to -80°C.
- 5. OBSERVATIONS:** proteins should be maintained frozen at high concentrations. In order to defrost the protein, maintain the aliquot at 25°C without shaking to avoid aggregation. Prior making test dilutions and after defrosting the protein is recommended to remove possible protein aggregates by centrifuging the stock solution, avoiding alterations in the immobilization of the biomolecule to the solid surface.

RELATED PRODUCTS:

None.

BIBLIOGRAPHY:

Gregoire *et al.* cDNA cloning and sequencing reveal the major horse allergen Equ c1 to be a glucoprotein member of the lipocalin superfamily. 1996, J Biol Chem 1996; 271:32951-9.

Gill SC, von Hippel PH. Calculation of protein extinction coefficients from amino acid sequence data. *Anal Biochem.* 1989 Nov 1;182(2):319-26.



Important Notes: During shipment, small volumes of product will occasionally become entrapped in the seal of the product vial. For products with volumes of 200 μ l or less, we recommend gently tapping the vial on a hard surface or briefly centrifuging the vial in a tabletop centrifuge to dislodge any liquid in the containers cap.

Although recombinant antigens are expressed in non-pathogenic *E. coli* and bacterial integrity is destroyed during purification, the antigen preparation should be handled as potentially infectious.

NOT FOR DIAGNOSTIC USE, FOR RESEARCH USE ONLY

Recombinant allergen Equ c 1 for *Equus caballus* (Domestic horse)

Rekom Biotech S.L. – BIC-Granada, Avda. Innovación, 1 – 18016, Granada (Spain) Tel: +34 958 63 70 85
E-mail: info@rekombiotech.com – Web: www.rekombiotech.com – An ISO 9001:2008 Certified Company

Page 2 of 2

